

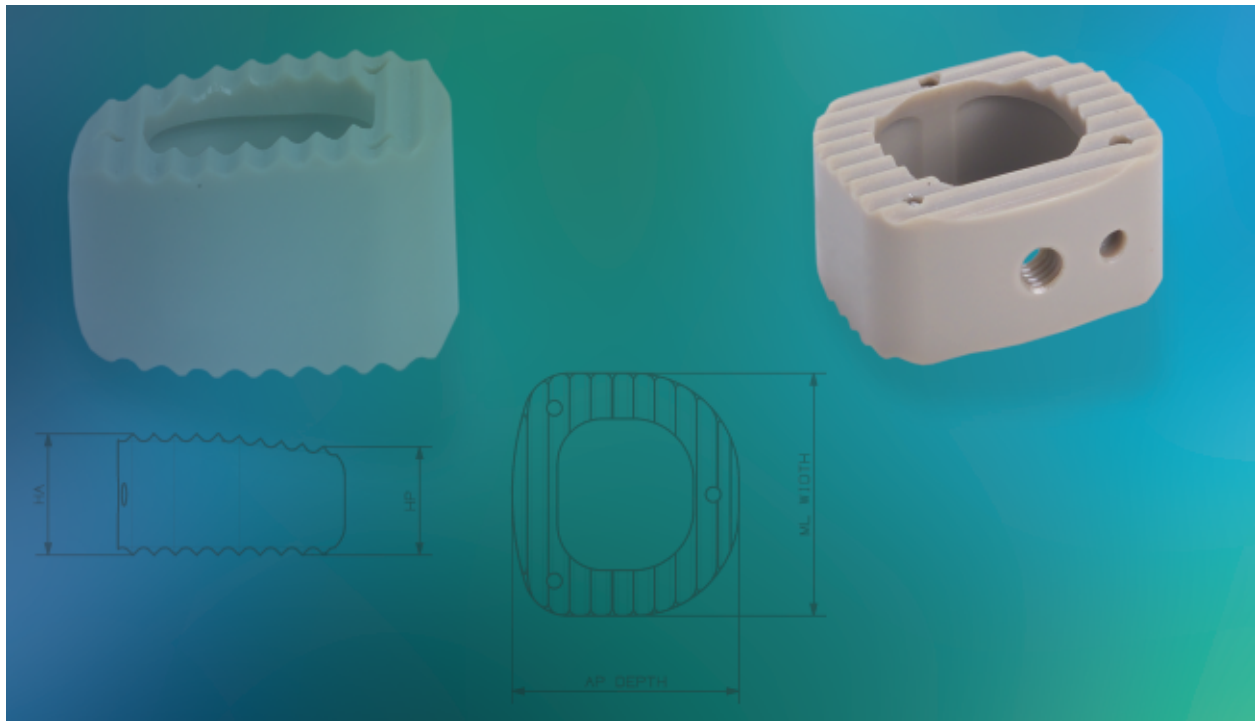
NEOCIF[®]-SL Intersomatic Cervical Cage

- *Spikeless Cervical Cage*
- *Textured surfaces provide expulsion resistance*
- *Radiolucent material offers an accurate post-op visualization and assessment of the fusion*
- *Implant design provides generous bone graft area*
- *Available in a full range of heights*

NEOCIF[®]-SL

Manufactured From

PEEK-**OPTIMA**[®]



NEOCIF[®]-SL Intersomatic Cervical Cage

NEOCIF-SL Features



PEEK-OPTIMA Material

- Biocompatible and radiolucent
- Modulus of elasticity is similar to human cortical bone

Lordotic Superior Endplate

- 7° angle to restore the natural cervical lordosis

Three Titanium Markers

- Enhances post-operative visualization

Large Core Diameter

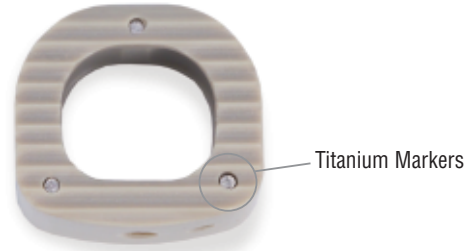
- Maximizes space for bone graft material

Surface

- Serrated superior and inferior surfaces to reduce expulsion
- Large Peripheral Weight Bearing Surface

Intuitive Instrumentation

- Surgeon-developed, user friendly design



Sizes

- Available in a variety of heights from 4mm to 9mm and footprints of 13mm and 15mm

Implants Dimensions

AP x HA	"Core Volume (cc)"
13 x 4	0.21
13 x 5	0.28
13 x 6	0.36
13 x 7	0.44
13 x 8	0.52
13 x 9	0.59
15 x 4	0.27
15 x 5	0.36
15 x 6	0.45
15 x 7	0.55
15 x 8	0.65
15 x 9	0.75

The **NEOCIF-SL** Intersomatic Cervical Cage may be used as a stand-alone implant for single-level Anterior Cervical Discectomy and Fusion (ACDF) procedures.

